



City of Cambridge

DEPARTMENT OF PUBLIC WORKS

PLANNING & ZONING

1025 N. WASHINGTON STREET

CAMBRIDGE, MARYLAND 21613

TELEPHONE: 410-228-3790 EXT 103

FAX: 410-228-3814

Memorandum

Date: May 4, 2021
To: Planning Commission
From: Pat Escher, A.I.C.P., City Planner
Regarding: Bank of America Stand Alone ATM

The Planning Commission heard this item at their last meeting and wanted more information about what the appearance of these facilities. The applicant has supplied these graphics of different locations that would be similar to what would be built in Cambridge.

BANK OF AMERICA

INTERNATIONAL CENTER RATM



PRE-INSTALLATION



PRE-INSTALLATION



POST INSTALLATION



POST INSTALLATION

BANK OF AMERICA
14328 Jefferson Davis Highway
Woodbridge, VA 22191



BANK OF AMERICA

TALBOTT CENTER RATM



PRE-INSTALLATION



PRE-INSTALLATION



POST INSTALLATION



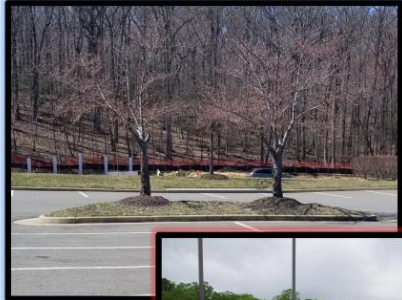
POST INSTALLATION

BANK OF AMERICA
1059 Rockville Pike
Rockville, MD 20852



BANK OF AMERICA

FORTUNA PLAZA RATM



PRE-INSTALLATION



PRE-INSTALLATION



POST INSTALLATION



POST INSTALLATION

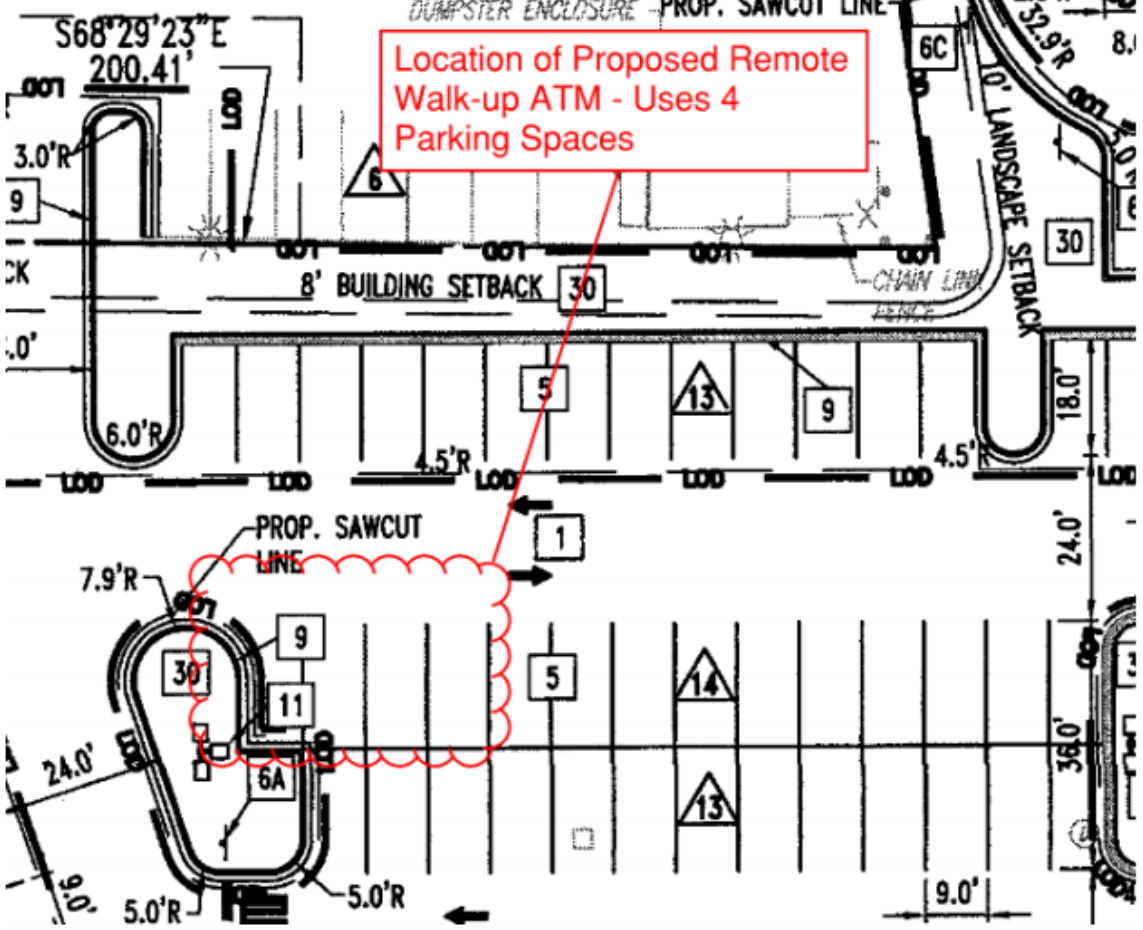
BANK OF AMERICA
4418 Fortuna Center Plaza
Montclair, VA 22025

ADC
Advanced Design Construction

CONSTRUCTION EASEMENT

DUMPSTER ENCLOSURE - PROP. SAWCUT LINE

Location of Proposed Remote Walk-up ATM - Uses 4 Parking Spaces



Existing Floor Plan



Proposed Floor Plan

CONCRETE ISLAND TO ACCOMMODATE NEW FRAMES-R-EXT-WU-KIO-NO_3-D-0705 WU ATM

NEW ADA COMPLIANT RAMP

(1) FRAMES-R-EXT-WU-KIO-NO_3-D-0705 WU ATM WITH CANOPY ATM MODEL TO BE DERIVED FROM WALK OF ATM

PJM TO VERIFY IF WE CAN BE ASSIGNED ADA PARKING SPACE FOR WU ATM USE

PROVIDE 4" BOLLARD TO PROTECT KIOSKS FROM VEHICLES (TYP.)

NOTE:
 * ALL DIMENSIONS ARE APPROXIMATE AND BASED ON PRELIMINARY INFORMATION PROVIDED AS PART OF THIS EXERCISE

* ENSURE SUFFICIENT LIGHTING IS PROVIDED AND MATCHES REQUIREMENTS OF B&A ATM SECURITY/PROTECTIVE SERVICES TEAM

