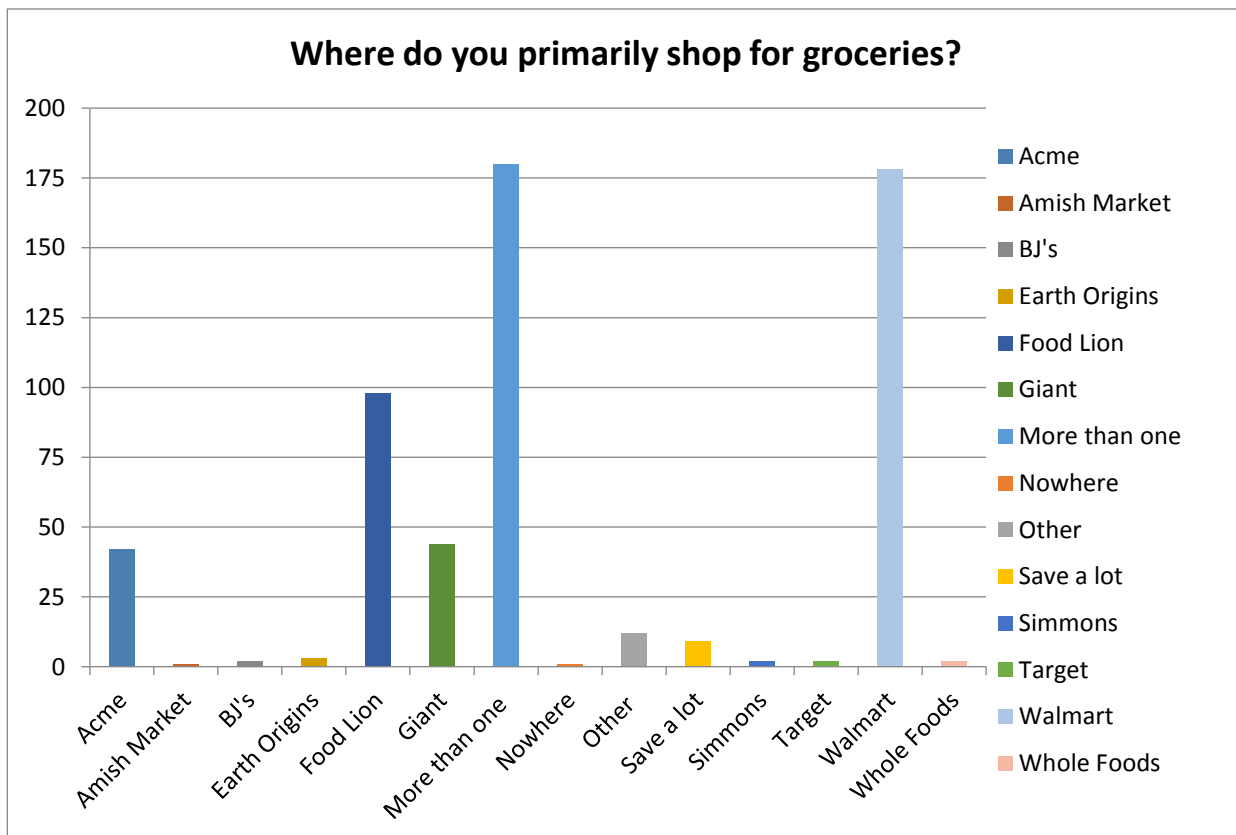
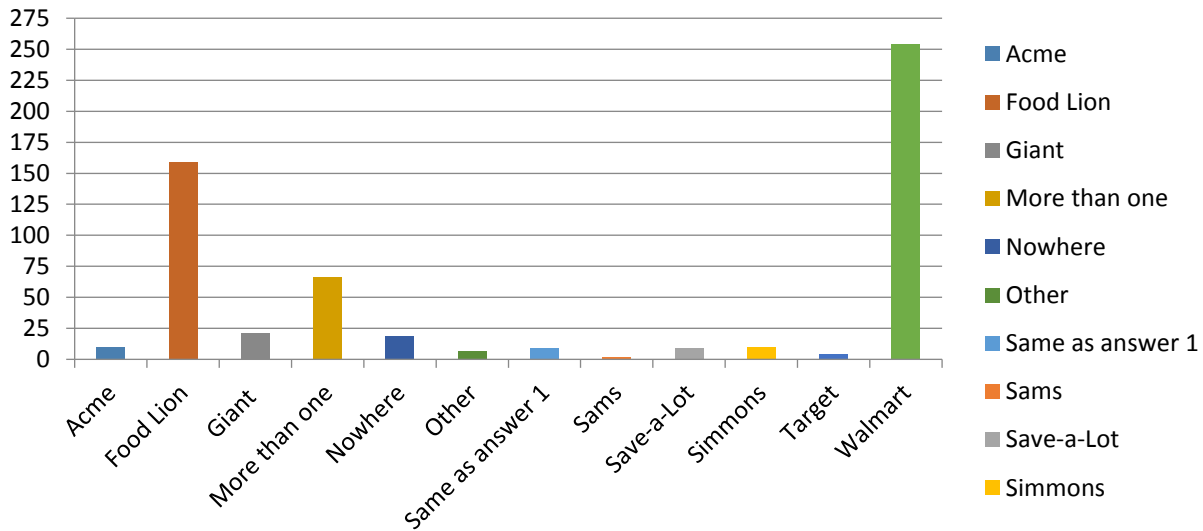


Route 50 Redevelopment Survey

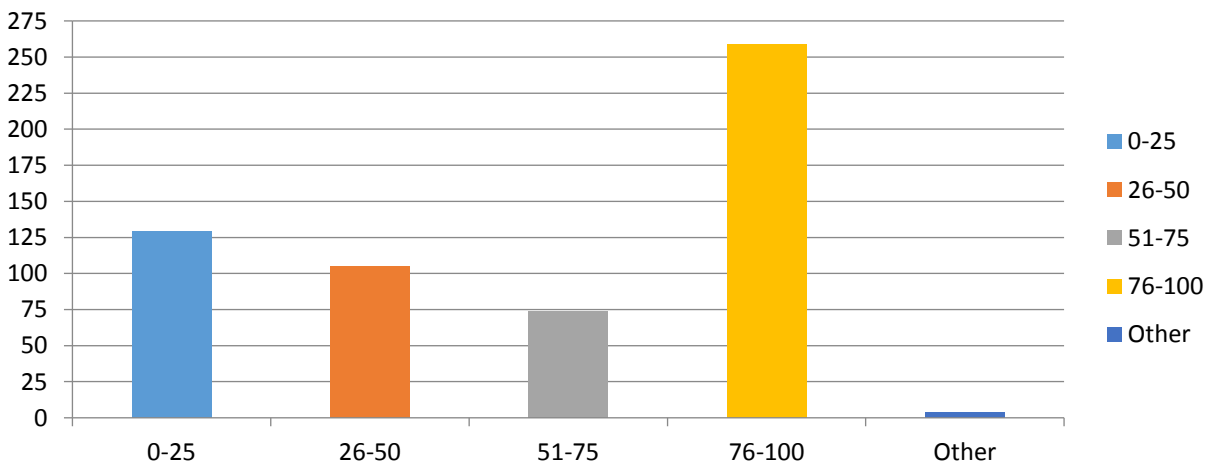
On February 9th, 2016 the Cambridge Planning and Zoning and Economic Development offices asked the citizens of Cambridge to take a brief survey, in order to get a snapshot of the shopping activity in the city. Over 500 people across a range of ages responded to the survey, which staff has compiled into the charts below.



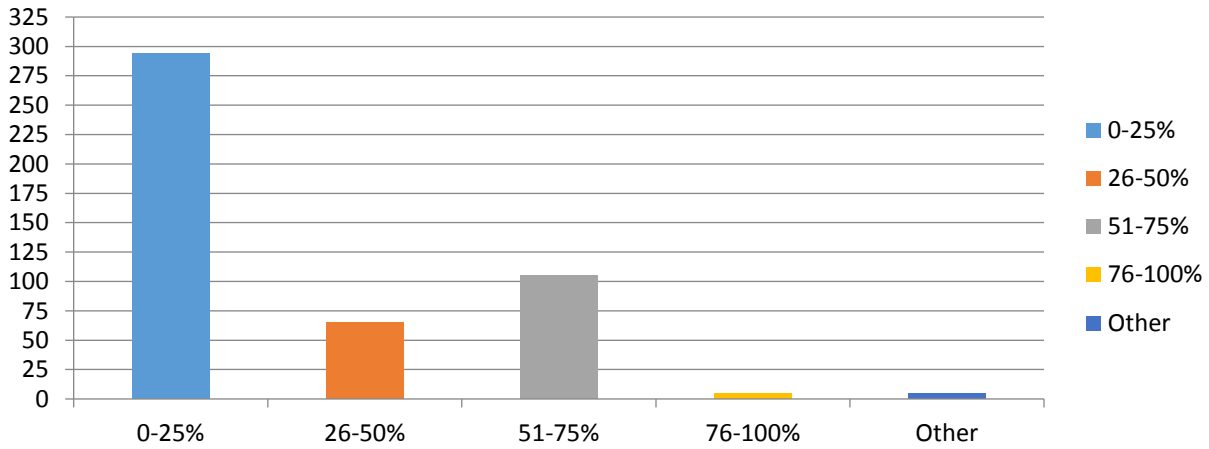
Where do you primarily shop for groceries during a weather event? Please include the name of the store and the location that you primarily frequent.



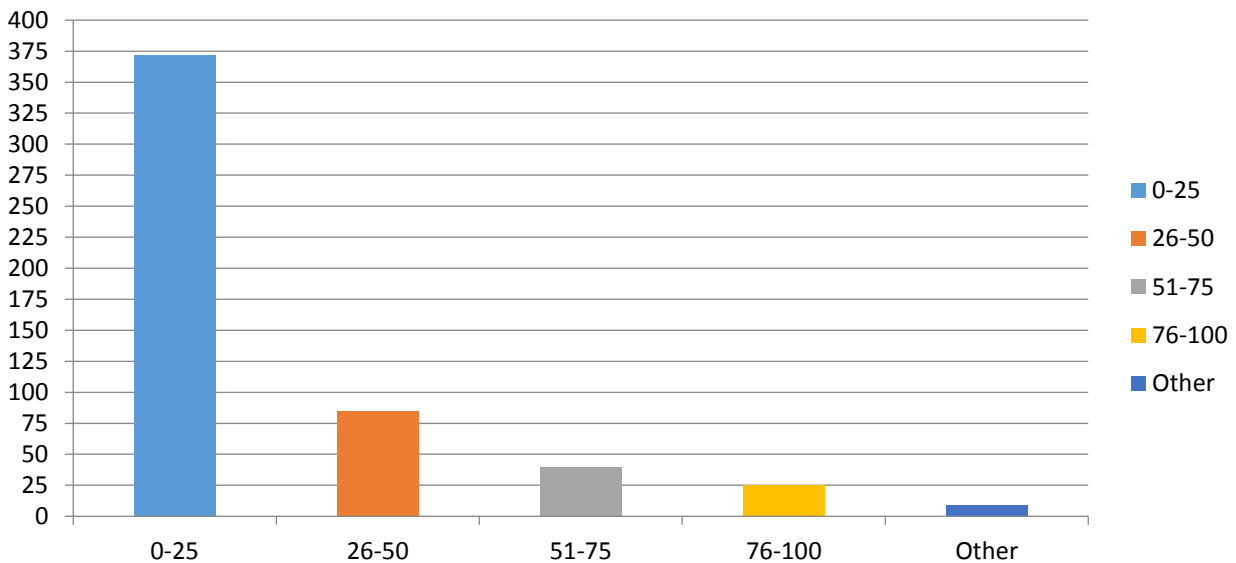
What percentage (if any) of your grocery shopping do you do in Cambridge?



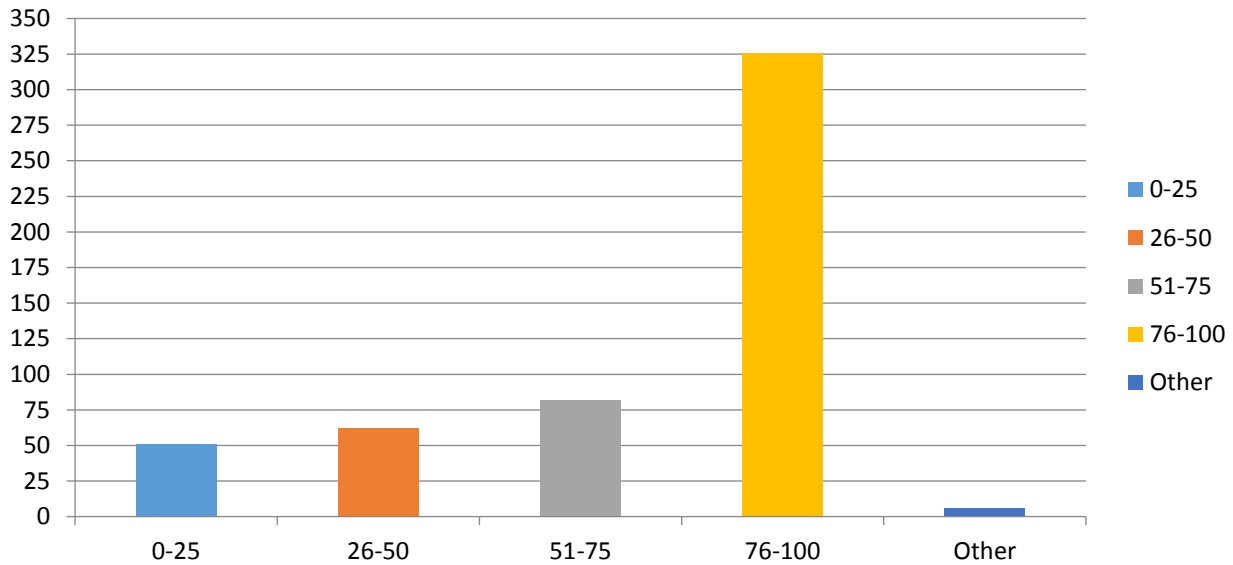
What percentage (if any) of your grocery shopping do you do elsewhere?



What percentage (if any) of your retail shopping do you do in Cambridge?



What percentage (if any) of your retail shopping do you do outside of Cambridge?



How old are you?

